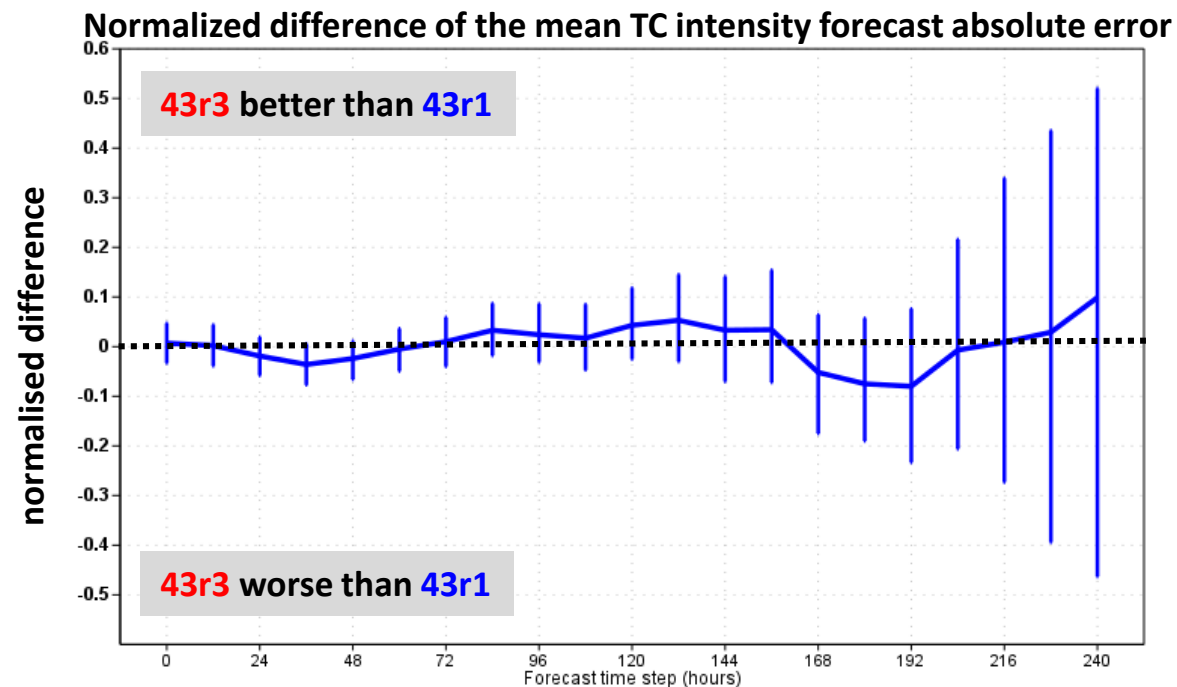
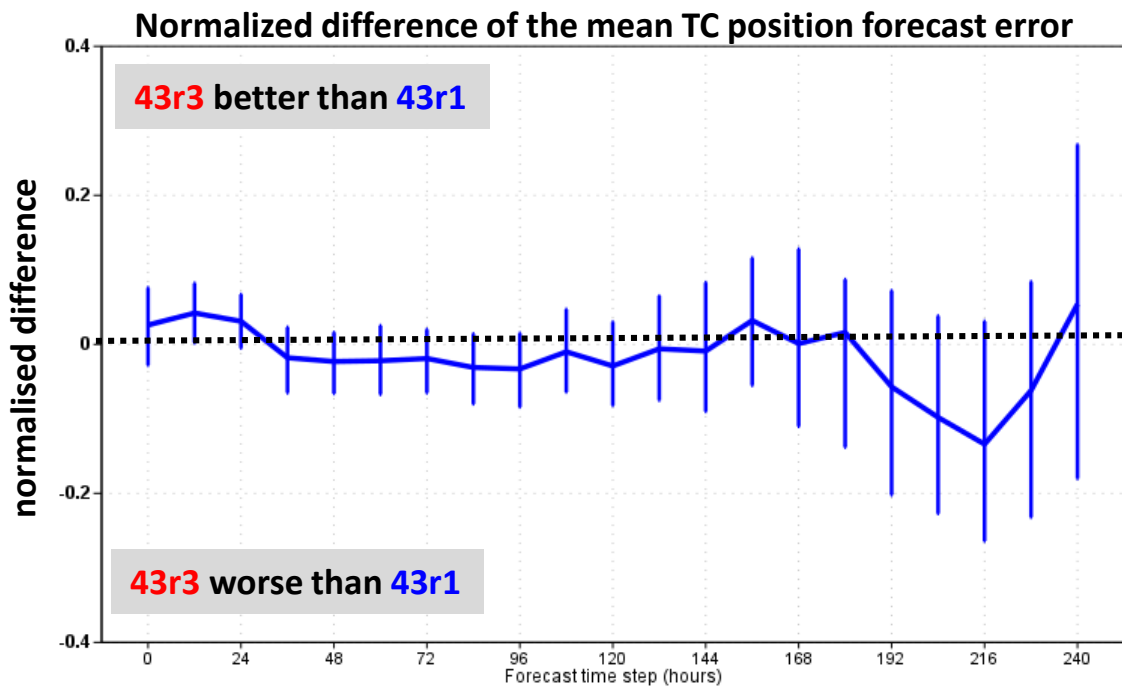
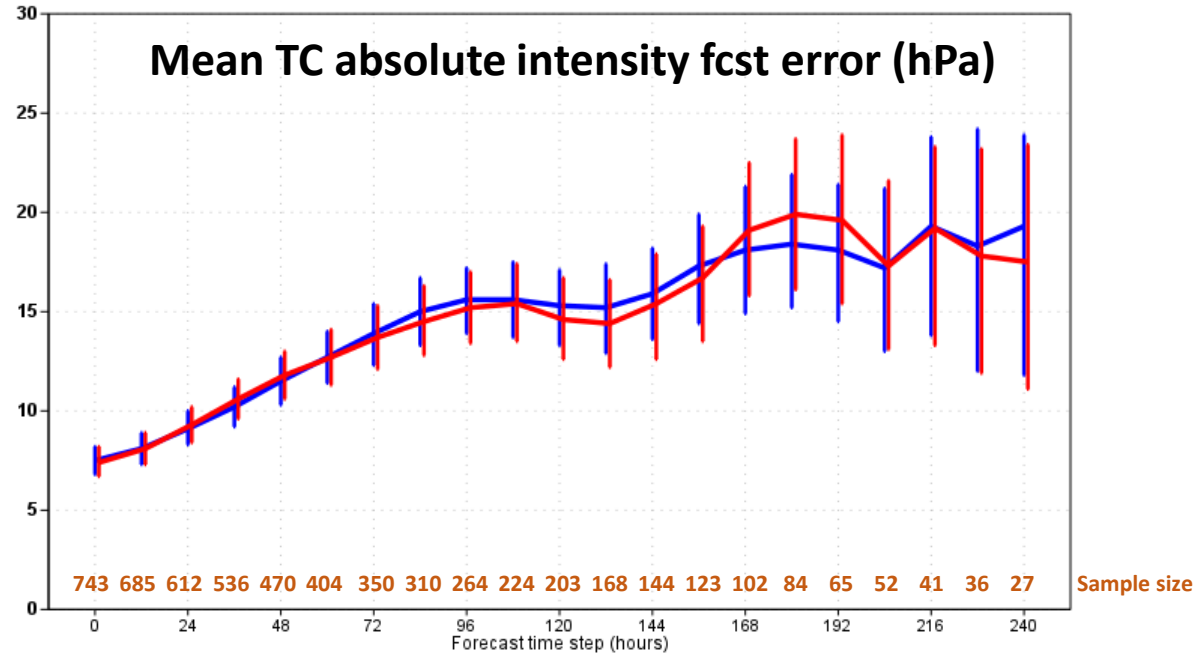
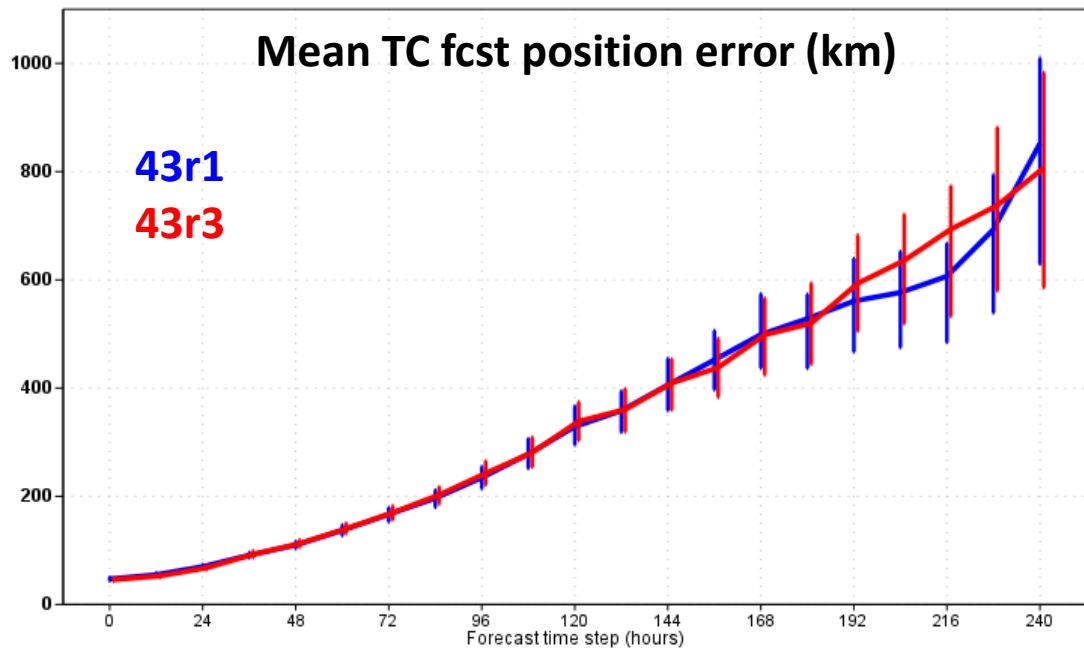


Tropical Cyclone forecast performance statistics

- Figures: TC position (intensity) forecast mean error as a function of the forecast lead time up to 10 days for the IFS cycles **43r1** and **43r3** HRES (~10 months of forecast runs).
- Observations are based on the TC reports of position and estimated minimum mean sea level pressure at the centre of the cyclone
- The error bars indicate the 95% confidence interval using bootstrap method based on 1000 samples.
- Numbers on the bottom of the figure showing the mean absolute TC forecast intensity indicate the size of the sample for each time step of both model cycles.
- Homogeneous samples for both forecast performance statistics.



Mean TC intensity forecast error

TC intensity forecast error between **43r1** and **43r3**

Level of confidence 95% (bootstrap)

