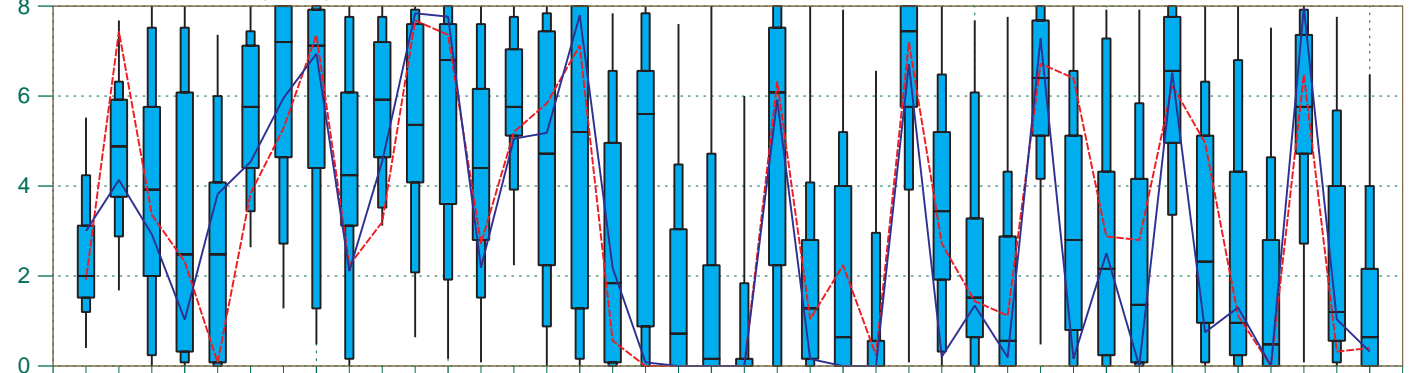


EPS Meteogram

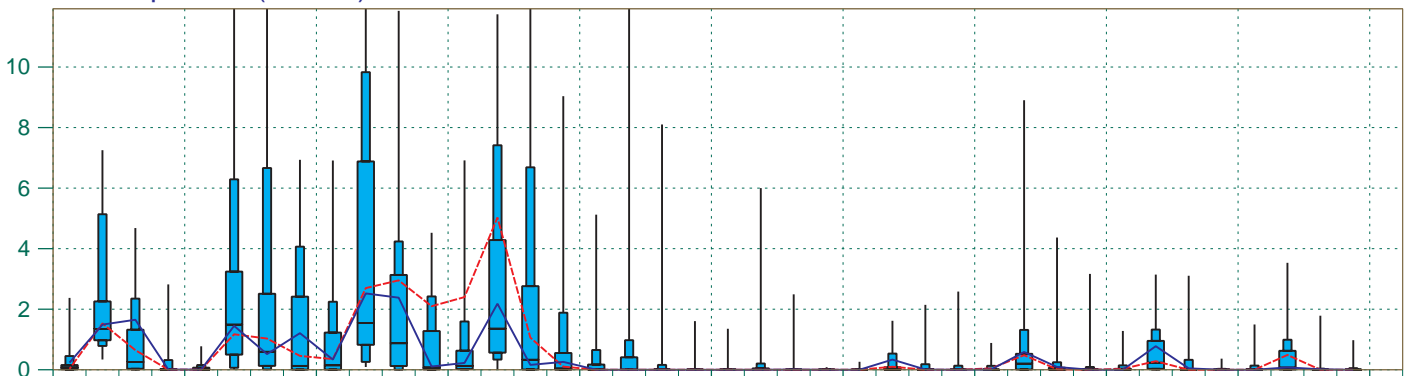
Addis Ababa 9.13°N 38.81°E (EPS land point) 2363 m

Deterministic Forecast and EPS Distribution Friday 28 September 2012 00 UTC

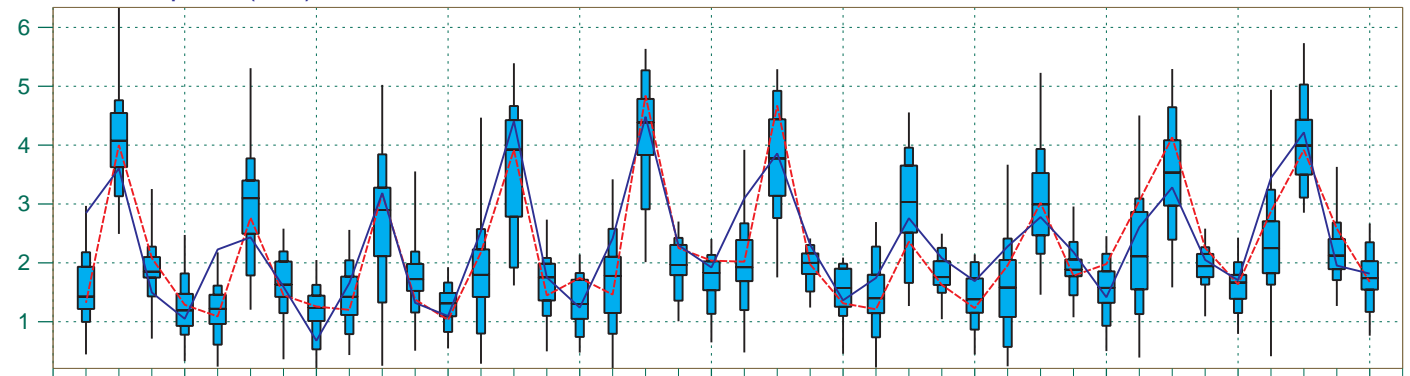
Total Cloud Cover (okta)



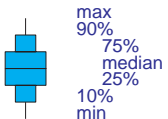
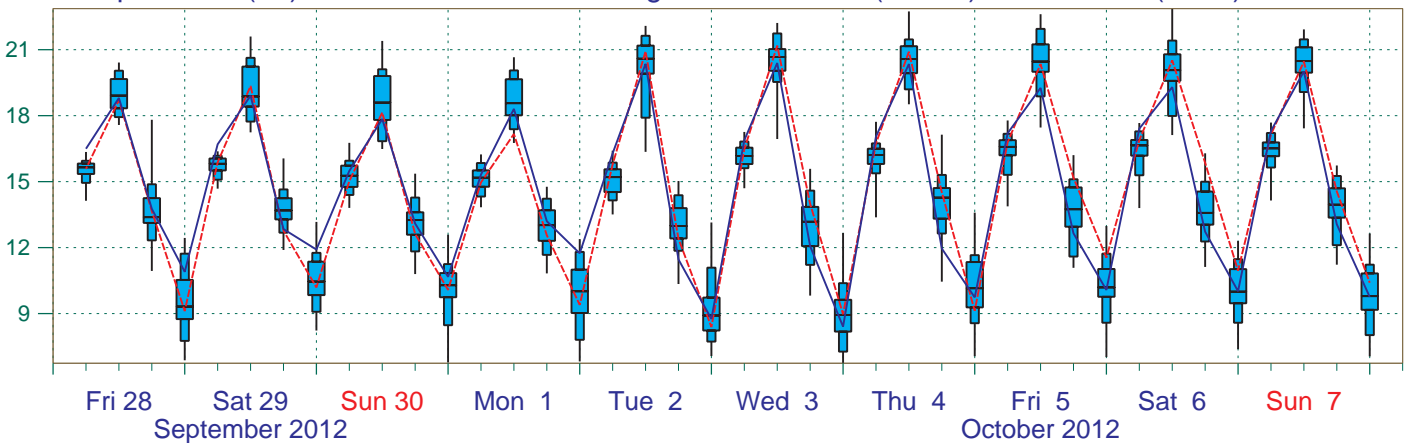
Total Precipitation (mm/6h)⁷



10m Wind Speed (m/s)



2m Temperature (°C) reduced to the station height from 2661 m (T1279) and 2575 m (T639)



EPS Control(31 km) High Resolution Deterministic(16 km)