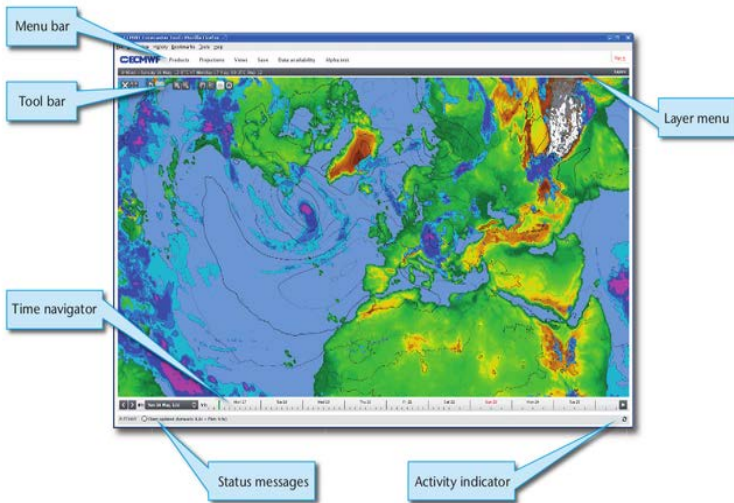


ecCharts application hands-on practical

Overview



Layers



1. Login to eccharts.ecmwf.int/forecaster with your user-id and web password.
2. Click "Products" on menu bar. You will see a list of your products there on the sliding panel.
3. Click on "more products" on the right hand-side. You will see the pre-defined product list (product catalogue). They are just for guidance, you can create many products of yours as you like and save into the sliding panel.
4. Filter for "precipitation". You will see the list of products having "precipitation" in their keyword descriptions.
5. Select "Total precipitation", click "View in map".
6. Click and move the mouse (pan) on the map to change the area.
7. Click on the zoom icon. Select a rectangular area to zoom into. Or use (zoom in/out icons)
8. Open "Projections" menu. A projection object is a combination of a pre-defined area and a map projection.
9. Select "Europe" (if not in the panel, use "More projections").
10. Select forecast step to t+120. You can use time navigator at the bottom of the page or select the related box on "Data availability" menu item. Data availability shows all available forecast

steps and previous forecast runs common to layers on display. You can move on data availability table by using arrow keys.

Views

11. Click info window to view information about the map shown (Shows the layer titles, forecast base time, step and forecast valid time)
12. Click "Legends window" to see the contour legends for layers.
13. Click "Cities window". Enter your town. "The selected point" in the application is now set to your town's location. Cities window is an interface to a comprehensive database for populated places.
14. Click "Probe window". Probe shows the nearest grid point data for displayed layers for a selected/clicked point.
15. Click "Meteogram window" to display meteograms. "More" on the right hand-side, will give the list of all available meteograms to select and display.
16. Change city in "cities window" to Reading or click on the map (If probe icon selected) to update probe/time series/meteogram windows to the new selected position. Note that all "view" interfaces are updated automatically once a new point is selected.
17. Click on "Layers" on the layer menu (right hand side). "Layers" is the main interface to change the chart content. It shows the list of layers on the map

on the displayed order. Icons on the left are to re-order the layers and to make the layer invisible. Icons on the right are to edit the layer and to remove the layer from the product list.

18. Click on edit icon for "Total precipitation" layer. (*VERY IMPORTANT*) *This is the place to change the visual styles and parameters (if defined) for a layer.*
19. Edit "Background" layer. Change the style to "Background map in dark grey".
20. Now, let's add another layer (parameter). Click "Add layers" on the layer window. *It shows the available layers to add on the chart. Layers are organised into groups like "HRES", "HRES wave", "ENS EFI", "ENS probabilities" ...*
21. Filter "precipitation" and select "Add to map" for Total precipitation probability" layer.
22. Edit total precipitation probability layer. Select event threshold and change threshold to 10. Click "Apply". Users can apply their custom thresholds to all probability layers.
23. Save this map to your product list by selecting "Save" on the menu and click "Save product as". Give it a name as you like. You can now see your product on "products" menu. Next time you login, this product will be ready for you.
24. Note that you can also save a projection by clicking "Save projection as ". Then the projection on the chart will be added to "projections" list.
25. "Products and Projections" can be removed or edited in your list (from the panels). To do that, Move your mouse over to the thumbnail of the product or projection, and you will see two icons; a bin icon to remove and a pen icon to edit.
26. Now, create a product with total precipitation and total snowfall. First load the product you have just created, remove "Total precipitation probability" and add "Total snowfall". Change total snowfall style to the 4th one from the top. Save the new product too.

Dashboard

27. Click on "go" and "Dashboard". That will take you to your dashboard interface. You can pull products and organise them (Layout menu item or simply drag and drop) and by creating many tabs.
28. Add a new tab and rename it to "Precipitation outlook".
29. Now add 2 products you have created to Dashboard (Add widget > New chart widget)
30. Each widget can be edited by clicking on the "Edit icon" (little pen) on title bar. Edit the chart widget and add the product you have just created on forecaster interface. (You can also apply any projection here)
31. Move your products side by side (Hold from the title bar of the widget and drag)
32. Now add "Total precipitation" and "Total snowfall" meteograms
33. You can create many tabs with many widgets to organize your workspace.
34. It is possible to move widgets around a tab or to a different tab. Simply drag a widget from title bar to a destination.
35. What happens on data availability/time navigator when a HRES and an ENS layers displayed together? *Data availability shows the common steps of all displayed layers in a product. (It will hide ENS 10-15 days forecast ...)*