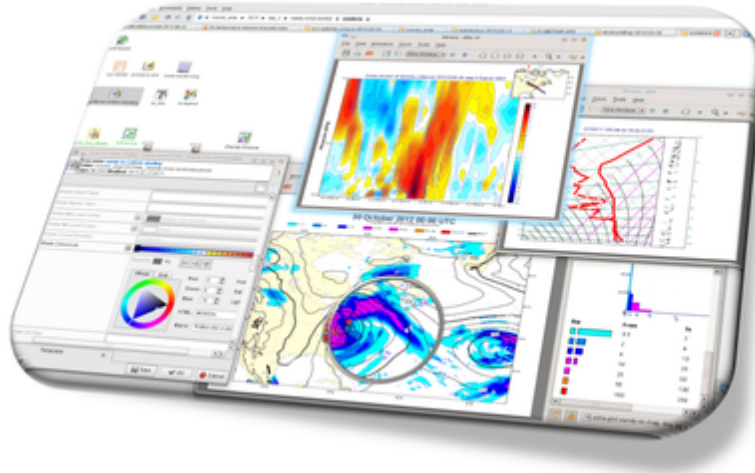


Metview

What is Metview



Metview is a meteorological workstation application designed to be a complete working environment for both the operational and research meteorologist. Its capabilities include powerful data access, processing and visualisation.

It features a powerful icon-based user interface for interactive work, a bespoke [scripting language](#) (Macro) and a [Python interface](#) for batch processing. These are linked through the ability to automatically convert icons into their equivalent script (Macro/Python) code.

Metview can take input data from a variety of sources, including:

- GRIB files (editions 1 and 2)
- BUFR files
- MARS (ECMWF's meteorological archive)
- ODB (Observation Database)
- Local databases
- ASCII data files (CSV, grids and scattered data)
- NetCDF

Powerful data filtering and processing facilities are then available, and if graphics output is desired, then Metview can produce many plot types, including:

- map views in various projections
- cross sections
- vertical profiles
- x/y graph plots
- intelligent overlay of data from various sources on the same map
- arrangement of multiple plots on the same page

Metview can also interface with external models and applications, such as [VAPOR](#), [Met3D](#), [FLEXTRA](#) and [FLEXPART](#).

Metview was developed as part of a cooperation between [ECMWF](#) and [INPE](#) (Brazilian National Institute for Space Research).



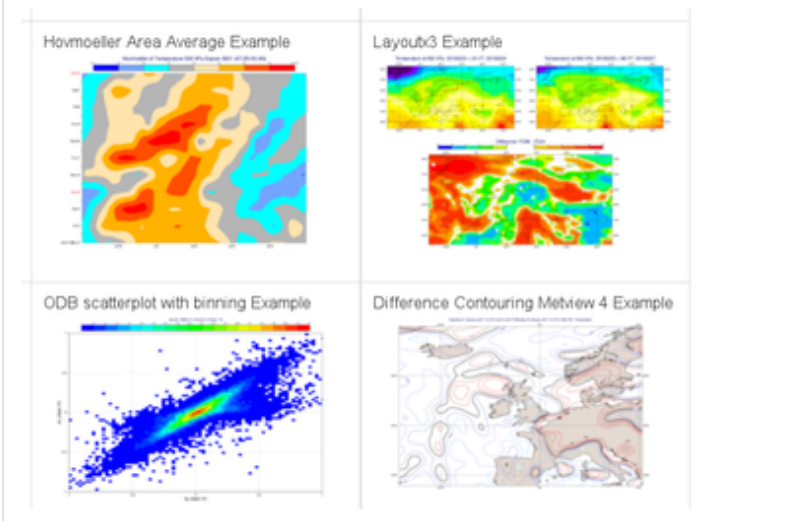
Report a bug or issue

Please send an email to software.support@ecmwf.int or go to [Issues](#) if you have any suggestions for improvements or have discovered a bug with this software package

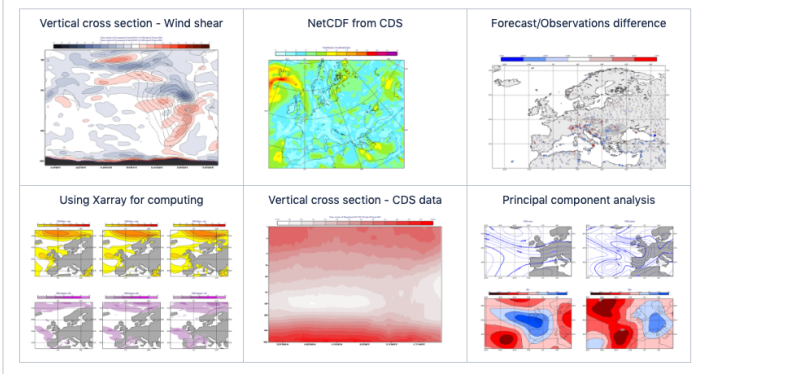
Quick links

- [Releases](#)
- [Change History](#)
- [Metview at ECMWF](#)
- [User Guide](#)
- [Articles](#)
- [Gallery](#)
- [Training material](#)
- [CodesUI](#)

Gallery



Jupyter Notebooks



Search this space ...

Recently Updated

[ECCHARTS](#)

yesterday at 9:01 PM • updated by Sandor Kertesz • [view change](#)

[Clean File](#)

yesterday at 8:57 PM • updated by Sandor Kertesz • [view change](#)

[Fieldset Functions](#)

yesterday at 8:42 PM • updated by Sandor Kertesz • view change

[Grib Vectors](#)

yesterday at 8:05 PM • updated by Sandor Kertesz • view change

[Symbol Plotting](#)

yesterday at 8:04 PM • updated by Sandor Kertesz • view change

[Thermo View](#)

yesterday at 8:03 PM • updated by Sandor Kertesz • view change

[Taylor Grid](#)

yesterday at 7:56 PM • updated by Sandor Kertesz • view change

[Observation Plotting](#)

yesterday at 7:55 PM • updated by Sandor Kertesz • view change

[Percentile](#)

yesterday at 7:46 PM • updated by Sandor Kertesz • view change

[Average View](#)

yesterday at 7:18 PM • updated by Sandor Kertesz • view change

[ODB Filter](#)

yesterday at 7:18 PM • updated by Sandor Kertesz • view change

[Geopoints Functions](#)

yesterday at 7:08 PM • updated by Sandor Kertesz • view change