

# The Web server

The ECaccess gateway HTTP/S interface allows Member States to manage their job submissions and file transfers from their Web browser, e.g. Firefox, Mozilla or Internet Explorer. This section gives an overview of what this interface provides and how it works. Please note that only interactive authentication as described in [Security authentication](#) is supported. The main purpose of the HTTP/S plugin is to provide easy access and monitoring for on-line users. For use from within shell scripts (batch), most of those features are also provided through the FTP plugin and are described in the previous sections.

- [Authentication](#)
- [Features](#)
- [Users views](#)
- [Ectrans setup](#)

## Authentication

Assuming that the Member State ECaccess gateway (see [Ecaccess concepts](#)) runs on the server "ecaccess.meteo.ms", users connect to the application by pointing their Web browser at "http://ecaccess.meteo.ms:9080/" and will be redirected to the login page. Note that the default HTTP port number used for ECaccess is 9080.

By giving an ECMWF user identifier and a passcode, the user is authenticated and routed to a personal page; a user context is maintained for the subsequent operations from his browser. Users have the ability to request everything available from their account, until the time allocation expires or the "logout" option from the "Account" menu is selected.

Users connecting for the first time to the login page of the Web server will receive a security alert from their browser. This is normal; users have to accept the HTTP/S plugin certificate as a trusted certificate to allow the encryption of communications.

The procedure to trust the certificate depends on the browser:

- If using Internet Explorer, you will receive a security alert. You will be given an option to view the certificate. Select it, and then select the "install certificate" option. Follow the instructions to install the certificate. Once you have returned to the security alert box, select the "Accept" option.
- If using Firefox or Mozilla, you will receive a security alert. Follow the instructions in the alert box to accept the certificate as certified. In the last dialogue box you will be given an option to accept this certificate for all your sessions. Select it.

Once this procedure is complete, your future connections to the HTTP/S plugin will not produce any security alerts.

## Features

After successful authentication users are redirected from the login page to the main page, from which they will be provided with a menu including available operations described in this section. Note that the ECaccess gateway administrator can set up the HTTP/S plugin to secure only the login process. Therefore, when redirected from the secured login page to the unsecured main page you may receive a security alert. This is a normal message; just select the "Accept" option to continue. The main page provides the following options (organized through menu entries in the left margin): Browsing menu

- Browse files: the user can browse through his ECHOME, ECSCRATCH or ECFS files and directories.
- Delete files: users can select files to be deleted from the different places listed above.
- Copy files: users can copy files between two domains (files can be copied from an ECSCRATCH directory to an ECFS directory, for example).
- Transfer files: users can use their browser facilities to transfer files between their computer and their ECHOME, ECSCRATCH or ECFS directories; files are transferred over an FTP connection.
- Add scripts to the job list: users can select one or several scripts and add them to their job list for later submission. Users may continue browsing files, adding more scripts to their basket.
- Select scripts for submission: users can select one or several scripts for immediate submission.
- Request secure file transfers: users can select files to be sent via their transfer spool (equivalent of the TSUB command of the FTP plugin or of the ecaccess-ectrans-request Web Toolkit command or of the ectrans command on the systems at ECMWF).

### Queues/Jobs menu

- Browse queues: users can browse through the ecs and hpc queues to select a target queue for their next job request.
- Browse basket: users can select scripts from their basket for their next job request.
- Submit new jobs: users can specify complementary parameters related to the execution and confirmed action of their request. The application then submits the job request, which is sent to the job spool (equivalent of the JREQ command of the FTP plugin).

### Monitoring menu

- Monitor job submissions: see [Monitoring batch job submissions](#)
- Monitor secure file transfers: see [Monitoring ectrans file transfers](#)
- Browse the events history: the history allows saving details (date, name and summary) concerning each event for later consultation by users themselves.

### Account menu

- Access the Ectrans configuration: the user can define the mapping between his ECMWF user identifier and his local user identifiers. He can also check his available protocols.
- Request a new ECaccess Certificate: the user can download a new ECaccess Certificate (description and purpose of these Certificates are discussed in section 3).
- Logout: the user context is deleted and the browser is sent back to the login page.

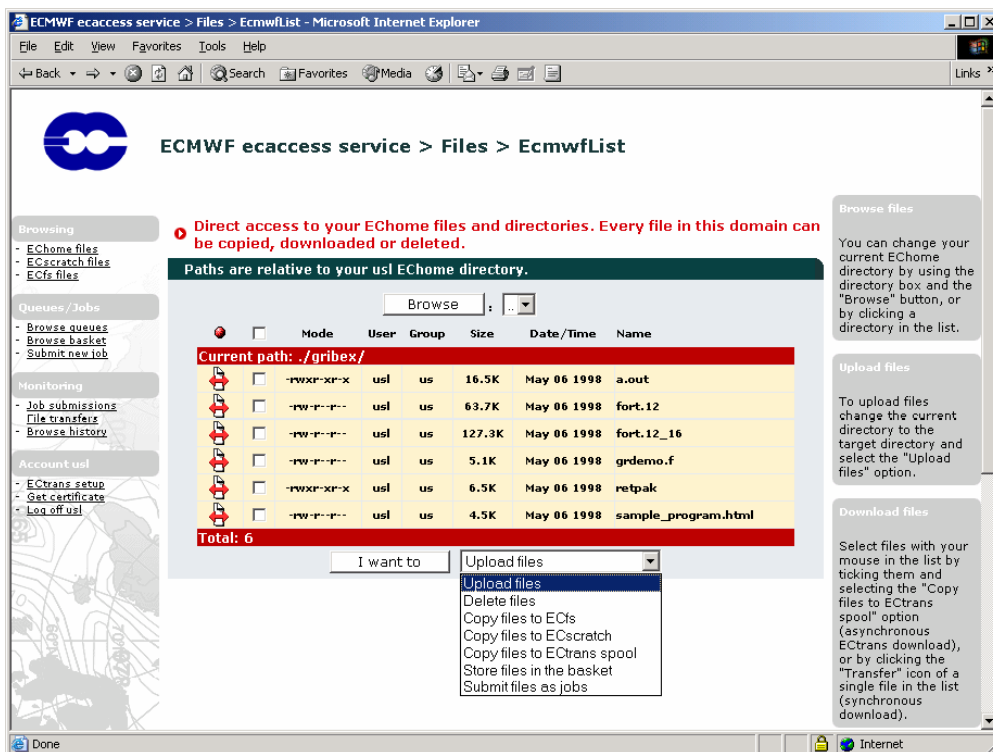
## Users views

The following snapshots illustrate a typical interactive session a user could have using the web interface.

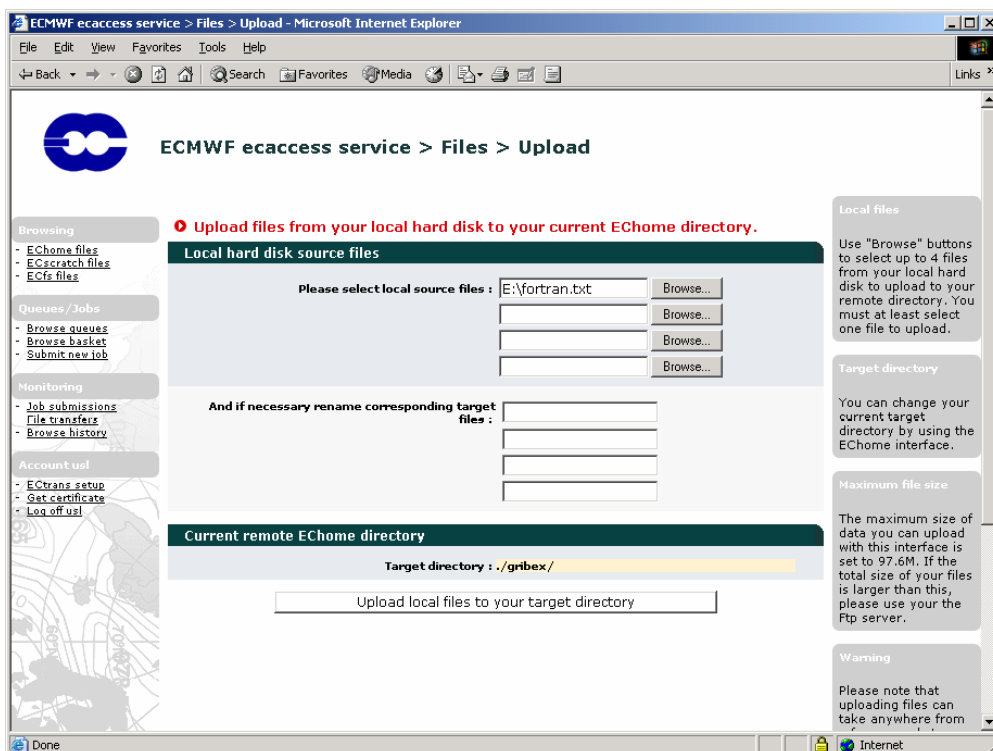
Different browsers on different operating systems may have different presentations of the same page. First, under the heading "Web session", login by providing your ECMWF user identifier and your passcode. You may modify the default value of 30 minutes to a greater value, if you plan to use the service with breaks of more than 30 minutes.

Once authenticated, your browser is redirected to the main page containing the menu described in the previous section (the default option is "Browsing > ECHOME files"). To browse other directories from your home directory, select a target directory and press the "Browse" button.

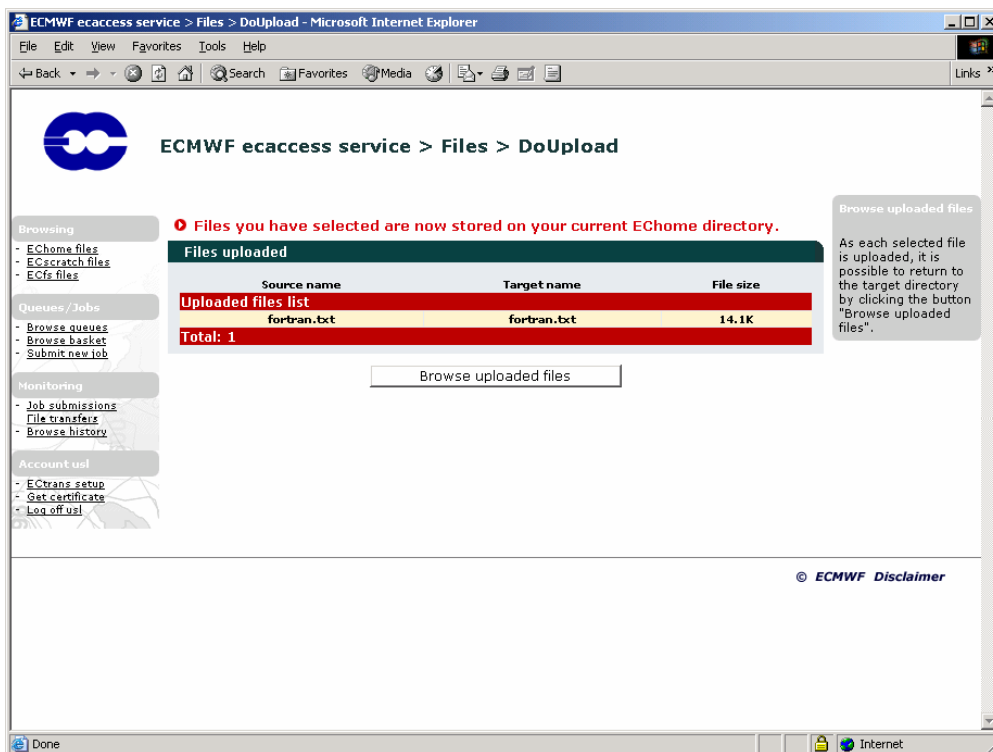
To download a file from your current directory (./gribex in this case), click the transfer icon of the target file in the list. To upload a file into your current directory select the "Upload files" option and click the "I want to" button.



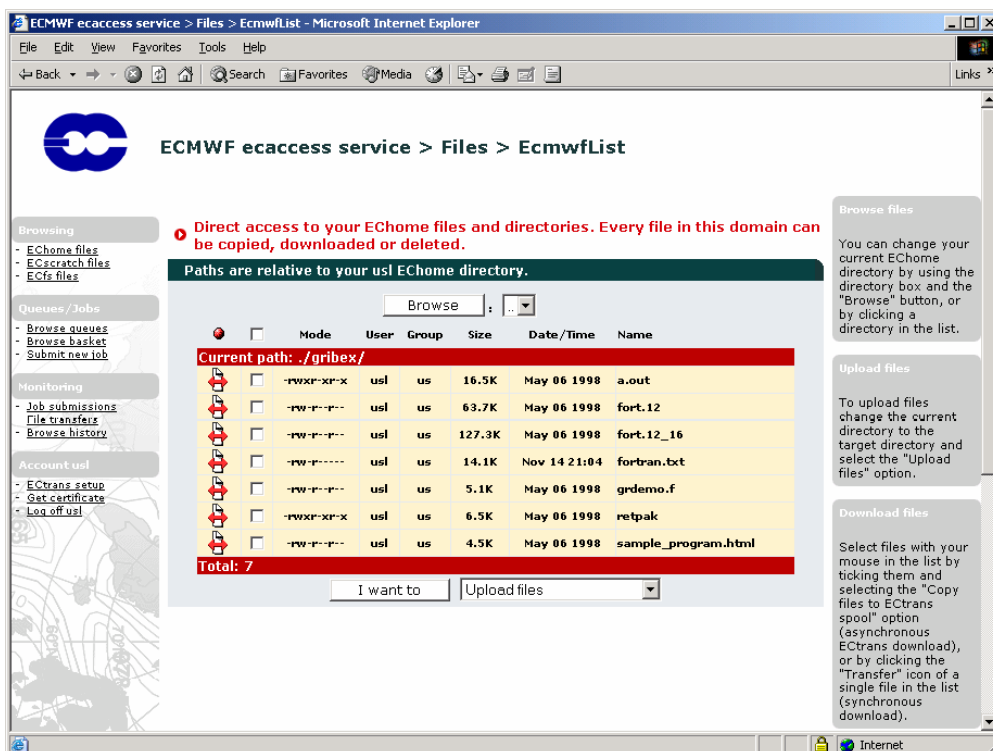
Click the "Browse" button and select the file (E:\fortran.txt) you want to upload to your current directory (you may repeat the operation three times if you want to transfer more than one file). Then click the "Upload local files to your target directory".



Once uploaded, a summary is printed to inform you of the size of the files uploaded. You may click the "Browse uploaded files" to return to your current directory (where your files have been uploaded).



You can see the "fortran.txt" file is now stored in your current directory. You can continue browsing directories and repeat the operation as many times as you need. To submit a job, you should first choose which system at ECMWF you want to use. To have a list of the systems at ECMWF supporting a batch service, click the "Browse queues" button.



The queues shown are known as ECAccess queues. For each of these ECAccess queues, you can click on the "show details" icon to see its associated batch queues on the system at ECMWF, e.g. below for the ECAccess queue hpdc:

ECMWF ecaccess service > Queues > List

Overview of all the available ECaccess queues.

ECaccess queues list

	INIT	WAIT	EXEC	DONE	STOP	Queue name
	0	0	0	1	2	hpcd (loadLeveler)
	0	0	0	2034	52	ecgate (LoadLeveler)
<b>Total: 2</b>						

ECMWF Disclaimer

To submit a new job, select the "Submit new job" option in the "Queues/Jobs" menu.

ECMWF ecaccess service > Queues > Details

Details of the ECaccess queue hpcd.

ECaccess queue hpcd (LoadLeveler)

Name : hpcd  
Host : hpcd.ecmwf.int  
Active : true  
System : LoadLeveler  
Comment : submission on hpcd

Total number of INIT requests : 0  
Total number of WAIT requests : 0  
Total number of EXEC requests : 0  
Total number of DONE requests : 1  
Total number of STOP requests : 2

Overview of all the available batch queues.

Available batch queues for hpcd

Name	Comment
<b>LoadLeveler batch queues</b>	
debug Default interactive class	
ts Time-critical MS serial/single task work	
os Operational serial/single task work	
ns Serial/single task work	
bench Benchmark class	
n2 Parallel work	
n8 Parallel work	
np Parallel work	
tp MS time-critical parallel work	
op Operational parallel work	
diag Diagnostic jobs only	
<b>Total: 11</b>	

Submit a job to this queue

You may enter your script in the text area provided or select a script from your computer. Select the target queue ("hpcd" in this case). Note that the batch queue (or class) and other batch directives have to be included in your script. Alternatively, you can inform ECaccess that your script does not contain batch directives. In this case, default values will be used and ECaccess will fully manage your submission. Once your script is read, click the "Submit job" button to send your request to the server. The list of notifications allows you to attach your job to one event in the ECMWF operational suite. Please refer to the Web page on [submission of time critical jobs](#) for further details.

ECMWF ecaccess service > Jobs > Submit - SeaMonkey

File Edit View Go Bookmarks Tools Window Help

**ECMWF ecaccess service > Jobs > Submit**

**Submit a script.**

**Source script**

Please write your script :

```
# Batch request script
#@ class = ns
#@ queue

cd $TEMP
xft prog.f -o prog
./prog
```

Or upload it from :

**Subscribe to notification(s).**

**Subscription(s)**

<input type="checkbox"/>	Id	Name	Comment
<b>Notification(s) list</b>			
<input type="checkbox"/>	172	ef00hmetgram	At this stage, the EPS metgram database at 00UTC has been updated.
<input type="checkbox"/>	179	fc12h036	At this stage, the deterministic forecast at 12UTC for step 36 (one day and a half) is complete.
<input type="checkbox"/>	180	fc12h072	At this stage, the deterministic forecast at 12UTC for step 72 (3 days) is complete.
<input type="checkbox"/>	181	fc12h144	At this stage, the deterministic forecast at 12UTC for step 144 (6 days) is complete.
<input type="checkbox"/>	285	moforefc	At this stage, the Monthly Forecast hindcast products have been updated.
<input type="checkbox"/>	182	fc12h240	At this stage, the deterministic forecast at 12UTC for step 240 (10 days) is complete.
<input type="checkbox"/>	183	fc00hmetgram	At this stage, the classical metgram database 00UTC has been updated.
<input type="checkbox"/>	184	fc12hmetgram	At this stage, the classical metgram database 12UTC has been updated.
<input type="checkbox"/>	187	wg00h240	At this stage, the global wave model at 00UTC is complete (this is the same as fc00h240).
<input type="checkbox"/>	324	ef00h504	At this stage, the ensemble forecast model at 00UTC - for step 504 (21 days) is complete
<input type="checkbox"/>	343	bc00h072	At this stage, the boundary condition forecast at 00UTC - step 72 - is complete.
<input type="checkbox"/>	167	an00h000	At this stage, the analysis at 00UTC is complete.
<input type="checkbox"/>	168	an12h000	At this stage, the analysis at 12UTC is complete.

**Script content editor**

With the "script content editor" you can either enter your text line by line, or cut and paste the text from your computer.

**Script upload**

As an alternative to the "script content editor", you can press the "Browse" button to navigate on your hard disk and select a script file from your computer.

**Current PATH**

The script you are going to submit will be executed in your ECSCRATCH domain. All non absolute PATH used in your script will be relative to this domain.

**Subscription to events**

You can ask that your job is run when the ECMWF operational suite has reached some predefined stages, called notifications or events.

**Retry mechanism**

In order to have it...

Once the job is submitted, a summary screen gives you the job identifier number of your new job request. It can be used to reference the submitted job using the monitoring interface (described in the next section). If you want to arrange a secure file transfer of the result, click the "Transfer with Ectrans after execution" button.

ECMWF ecaccess service > Jobs > DoSubmit - Microsoft Internet Explorer

File Edit View Favorites Tools Help

Back Forward Stop Search Favorites Media Print Mail

**ECMWF ecaccess service > Jobs > DoSubmit**

**Your request has been successfully sent to the ECaccess queue hpca.**

**Request summary**

ECaccess queue name : hpca  
Batch starting date : Nov 14 21:50

JobId	Script name
<b>Script list</b>	
2900	[script content editor]
<b>Total: 1</b>	

**Track jobs**

As each job is begun it is assigned a job identity number (jobid). All jobs are kept track of by the "Job submissions" interface. You can access this interface to monitor your job requests thanks to the "Job submissions" menu.

© ECMWF Disclaimer

If required, modify the default values (gateway name, user identifier) and specify the erase option of the secure file transfer (erase option is discussed in [Unattended file transfer - ectrans](#)). Then click the "Send file(s) to your target host" to proceed.

ECMWF ecaccess service > Files > Download - Microsoft Internet Explorer

File Edit View Favorites Tools Help

Back Forward Stop Search Favorites Media Print

ECMWF ecaccess service > Files > Download

**Download file(s) from your current remote Ecmwf directory to your local hard disk.**

**Target file(s)**

The target name :

If the target file already exists :  ☐ keep in the spool

**Target host**

The target ECaccess gateway :   
And the remote identifier :

Do not run before (yyyy-MM-dd HH:mm) :

Send mail to :   
☐ at the beginning  
☐ at the end (on success)  
☐ at the end (on failure)

**Target file(s)**  
You can either rename a target file or cancel its transfer by leaving its associated field blank. However, you need at least one file to be properly set in order to process a download.

**Target gateway**  
Files are downloaded thanks to your ECaccess gateway. Your download request will succeed only if the specified gateway is accessible from Ecmwf and is running.

Done Internet

Once it is spooled, a summary screen gives you the copy identifier number of your new transfer request. It can be used to reference the secure file transfer using the monitoring interface (described in the next section).

ECMWF ecaccess service > Files > DoDownload - Microsoft Internet Explorer

File Edit View Favorites Tools Help

Back Forward Stop Search Favorites Media Print

ECMWF ecaccess service > Files > DoDownload

**Your request has been successfully sent to your Ectrans agent.**

**Request summary**

Gateway name : ecaccess.met.ms  
Remote identifier : my\_account

Copyid	Type	Target	Source
<b>Ectrans list</b>			
8258	Job file	job.e2900	e2900
8259	Job file	job.o2900	o2900
8260	Job file	job.i2900	i2900
<b>Total: 3</b>			

**Track transfers**  
As each transfer is begun it is assigned a copy identity number (copyid). All copyids are kept track of by the "Monitoring" interface. You can access this interface to monitor your copy requests thanks to the "File transfers" option in the "Monitoring" menu.

© ECMWF Disclaimer

Done Internet

## Ectrans setup

Before being able to launch unattended transfers from ECMWF ([Unattended file transfer - ectrans](#)) back to your site, using the command ectrans, you will have to configure an ectrans association between your ECMWF User ID and the remote system and user-id. This is done through the web interface, by clicking "Ectrans setup" from the lower left panel.



ECMWF gateway service > Ectrans > Setup - Microsoft Internet Explorer

File Edit View Favorites Tools Help

Back Forward Stop Search Favorites Media Print

Links »

**ECMWF gateway service > Ectrans > Setup**

**1 Your ECMWF account.**



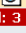
**Dominique Lucas,x2386**

Login : usl  
User id : 1107  
Group id : 1212  
Home directory : /home/us/usl

**2 Your Ectrans configuration.**

**Access methods associated with ECMWF user usl**

Name	Comment	Enabled
<b>List of Ectrans associations</b>		
No Ectrans associations.		
<b>Total: 0</b>		

Name	Module	Active
<b>List of Ectrans destinations</b>		
 genericFile	file	true
 genericFtp	ftp	true
 genericSftp	sftp	true
<b>Total: 3</b>		

Add association

**Ectrans**

From your ECMWF account (ECuser usl), you can use Ectrans to perform unattended file transfers to or from (one of) your local (Member State) account(s). You need to create associations with these MSUsers.

**Access methods**

The access method needs to be specified in the "remote" option of the "ectrans" command in the format association@destination where "association" specifies the Ectrans association and "destination" specifies the Ectrans destination.

**Managing Ectrans associations**

Click the expand button to the left of an Ectrans

To create a new association, click the "Add association" button. Choose an Association name, "trajectory" in the example below. This is the name that will be used as association (previously known as 'msuser') with the ectrans command. Fill in the remaining info, giving the required information on your local system. In the example below, we create an association named trajectory that will be used to transfer files using ftp by default to a local system named "system.meteo.ms" as a user local\_UID. The data transferred will be written into the directory /data/trajectory. The local files will have a temporary suffix ".tmp" added to their names during the transfer. Note that you can change the configuration of the ectrans association by modifying the options given in the window titled "Complementary information":

ECMWF gateway service > Ectrans > Create - Microsoft Internet Explorer

File Edit View Favorites Tools Help

Back Forward Stop Search Favorites Media Print

Links »

**1 MS user association details.**

**MS user to be associated**

Association name : trajectory  
enabled

Host name : system.meteo.ms  
Directory : /data/trajectory  
Comment : trajectory from ECMWF

Default destination : genericFtp

**Complementary information**

Please use the data content editor :

```
ftp.lowPort="no"
ftp.mkdirs="yes"
ftp.passive="yes"
ftp.portTimeOut="60000"
ftp.prefix=""
ftp.suffix=".tmp"
ftp.usetmp="yes"
sftp.mkdirs="yes"
sftp.prefix=""
sftp.suffix=".tmp"
```

**Login information**

Login : local\_UID  
Password : \*\*\*\*\*

Create this MS user

**Ectrans**

From your ECMWF account (ECuser usl), you can use Ectrans to perform unattended file transfers to or from a local (Member State) account(s). You need to create an association with an MS user.

**New MS user to be associated**

Ectrans uses the specified information to perform unattended file transfers to/from your local (Member State) account.

**Complementary information**

This is optional information, which can be used by an Ectrans module for example to perform some extra security check (e.g. certificate).

**Data content editor**

With the "data content editor" you can either enter your text line by line or

When you have entered all the information for your association, click the button "Create this MS user". A new association has been defined for you. Please note that (between all users) an association name can be defined only once per gateway. You can define more associations, e.g. to transfer files from ECMWF to different systems or other local UIDs. You can also allow other users at ECMWF to transfer files with ectrans to your association. To do this, click the "Grant Association(s)" button:




ECMWF gateway service > ETrans > Setup - Microsoft Internet Explorer

File Edit View Favorites Tools Help

Back Forward Stop Search Favorites Media Print

Links »

 **ECMWF gateway service > ETrans > Setup**

**Browsing**

- ECHome files
- ECscratch files
- ECfs files

**Queues/Jobs**

- Browse queues
- Browse basket
- Submit new job

**Monitoring**

- Job submissions
- File transfers
- Browse history

**Account usl**

- ETrans setup
- Get certificate
- Log off usl


**• Your ECMWF account.**

**Dominique Lucas,x2386**

Login : usl  
User id : 1107  
Group id : 1212  
Home directory : /home/us/usl

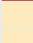
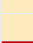
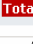
**• Your ETrans configuration.**

**Access methods associated with ECMWF user usl**

<input type="checkbox"/>	Name	Comment	Enabled
	trajectory	trajectory data	true

**List of ETrans associations**

**Total: 1**

<input type="checkbox"/>	Name	Module	Active
	genericFile	file	true
	genericFtp	ftp	true
	genericSftp	sftp	true

**List of ETrans destinations**

**Total: 3**

Add association Grant association(s) Delete association(s)

Click the expand button to see more

Done Internet

**ETrans**

From your ECMWF account (ECuser usl), you can use ETrans to perform unattended file transfers to or from (one of) your local (Member State) account(s). You need to create associations with these MSusers.

**Access methods**

The access method needs to be specified in the "-remote" option of the "etrans" command in the format association@destination where "association" specifies the ETrans association and "destination" specifies the ETrans destination.

**Managing ETrans associations**


Select the association to which you want to give access to another user. Enter the ECMWF user name. Then grant the association.

ECMWF gateway service > ETrans > DoGrant - Microsoft Internet Explorer

File Edit View Favorites Tools Help

Back Forward Stop Search Favorites Media Print

Links »

 **ECMWF gateway service > ETrans > DoGrant**

**Browsing**

- ECHome files
- ECscratch files
- ECfs files

**Queues/Jobs**

- Browse queues
- Browse basket
- Submit new job

**Monitoring**

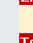
- Job submissions
- File transfers
- Browse history

**Account usl**

- ETrans setup
- Get certificate
- Log off usl

**• Association(s) you have selected.**

**Grant an ECMWF user**

<input type="checkbox"/>	Association	User	Full name
	trajectory	usl	Dominique Lucas,x2386

**List of ETrans associations**

**Total: 1**

ECMWF user name : usl

Grant association(s)

Done Internet

**Grant association(s)**

Once granted to an ECMWF user, an association can be used by this user in order to perform unattended transfers (on your behalf).

© ECMWF Disclaimer


The UID and name of the person you have given access to the association is now added to the list. To remove an entry from the list, click the "Remove from the list" icon on the left:

ECMWF gateway service > ECtrans > DoGrant - Microsoft Internet Explorer

File Edit View Favorites Tools Help

Back Forward Stop Search Favorites Media Print

Links »



ECMWF gateway service > ECtrans > DoGrant

Browsing

- EC home files
- EC scratch files
- EC fs files

Queues/Jobs

- Browse queues
- Browse basket
- Submit new job

Monitoring

- Job submissions
- File transfers
- Browse history

Account user

- ECtrans setup
- Get certificate
- Log off user


Association(s) you have selected.

Grant an ECMWF user

☐ Association


User

Full name

 ☐ trajectory

usi

Dominique Lucas,x2386

 ☐ -

usc

Carsten Maass,x2389 room224

Total: 2

ECMWF user name :

Grant association(s)

Once granted to an ECMWF user, an association can be used by this user in order to perform unattended transfers (on your behalf).

© ECMWF Disclaimer

https://ecaccess.ecmwf.int/ecmwf

Internet